

# SPEC SHEET + MEASUREMENTS



## OGIO® Women's Bolt Full-Zip Hoodie. LOG850

### Product photo



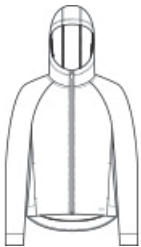
Clean design lines and a matte appearance give this double-knit full-zip a minimalist look with understated OGIO edge.

- 8.9-ounce, 77/23 cotton/poly
- 3-panel hood
- OGIO heat transfer label for tag-free comfort
- Reverse coil zipper with black metal pull with debossed O
- Raglan sleeves
- Slash pockets
- Black reflective O heat transfer on front left hem
- Drop tail hem

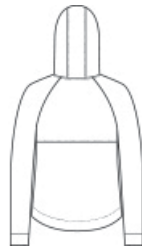
### CARE INSTRUCTIONS

Machine Wash Cold With Like Colors. Do Not Use Fabric Softener. Do Not Bleach. Tumble Dry Low. Remove Promptly. Cool Iron If Necessary.

### Sketches



front



back

# SPEC SHEET + MEASUREMENTS



## OGIO® Women's Bolt Full-Zip Hoodie. LOG850

### PRODUCT MEASUREMENTS

	XS	S	M	L	XL	2XL	3XL	4XL
Size	2	4/6	8/10	12/14	16/18	20/22	24/26	28/30
Body Length at Back	27	27 1/2	28	28 1/2	29	29 1/2	30	30 1/2
Bust	18 1/2	19 1/2	20 1/2	22	23 1/2	25	27	29
Sleeve Length from Center Back	31 1/2	32	32 1/2	33 1/8	33 3/4	34 3/8	34 3/4	35 1/8

**Body Length at Back:** Measured from high point shoulder to finished hem at back.

**Bust:** Measured across the chest one inch below armhole when laid flat.

**Sleeve Length from Center Back:** Measure from Center Back neck to shoulder point to sleeve hem.

### SIZE CHARTS

	XS	S	M	L	XL	2XL	3XL	4XL
Size	2	4/6	8/10	12/14	16/18	20/22	24/26	28/30
Bust	32-34	35-36	37-38	39-41	42-44	45-47	48-51	52-55

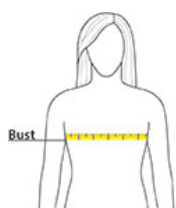
# SPEC SHEET + MEASUREMENTS



OGIO® Women's Bolt Full-Zip Hoodie. LOG850

## HOW TO MEASURE

---



### **BUST**

Measure under the arm and around the fullest part of the bust with arms down, keeping tape horizontal.

## COLORS

---



Blacktop  
PMS BLACK  
C



Deep Rose



Turbo Grey  
PMS 425C